



PASTEL SOCIETY OF MAINE **PSME**

2022 PSME SPRING NEWSLETTER

2022 PSME Board Members

President, Workshop Chair
MaryBeth Morrison, pastelsocietyofmaine@gmail.com

Treasurer, Susan E.Cunniff, treasurer.pastelsocietyofmaine@gmail.com

Recording Secretary, Norma Johnsen, drhulga@yahoo.com

Vice President/IAPS Representative /Membership Chair
Laura Beckering, membership.pastelsocietyofmaine@gmail.com

Member at Large, Sharon Gorman, Sara Ostrov

22nd Juried Exhibition Co Chairs, Annie Halvorsen, Christina Davis, crisdavis12@gmail.com

Newsletter/Email Correspondence, Mary Barrett jinspec@maine.rr.com

Website and Social Media Administrator
Terrilynn Dubreuil, pastelsocietyofmaine@gmail.com

Member Show CoChairs, Marijke Damrell, marijke.damrell@gmail.com
Cheryl Di Cara cdicara62@gmail.com

Scholarship Chair, Barbara Farchione, farchionebc@yahoo.com

Workshop Co Chair, Polly Castor

PSME Welcomes New Members

Eileen Casey, Sandwich, MA, **Andrew McDermott**, British Columbia, Ca, **Amy Puleo**, Bath, ME, **Elissa McMeniman**, Groton, MA, **Hilda Kurtz**, Bishop, GA, **Joni Parker Roach**, Groton MA, **Judy Sensibar**, Tucson AZ, **Miranda Smith**, Dallas TX,

President's Message

March 17, 2022

Spring is in sight! So many reasons to be hopeful for this year! I hope you are well and painting.

We've had one Board meeting this year, and planned a full calendar of events. We can use more help with the shows and workshops planned, see below.

Our Wednesday Wine and Watch series has been wonderfully received. Great presentation by Polly Castor, and demos by Aline Ordman and Andrew McDermott. The videos are available to members through the PSME gmail, call for links.

The board of directors and many volunteers are working to create a calendar of activities for members and communities.

Shows: Signature Member Show at Coastal Maine Botanical Gardens, Boothbay, ME. May 1-July 15. Opening reception on May 28, with a kids workshop, adults workshop, and plein air painters in the gardens. Deadline for submission of up to 2 works, April 20. Note: a registration fee is asked to help fund the kid's workshop packets, and the high school scholarships we will resume this year.

22nd Annual Open Juried Exhibition, Pastels Only, August 24-October 21, at Saco Museum. Submissions open March 20, close July 15 through Show Submit. \$4000. In awards.

Education: Tara Will Pastel Demo, Wednesday Wine and Watch, April 13 by Zoom.

Adult 3 hour Pastel Workshop with Diana Rogers, Coastal Maine Botanical Garden, May 28.

Kids 2 hour Pastel workshop with Barbara Farcione, Coastal ME Botanical Gardens, May 28.

Polly Castor Workshop, Abstracting the Landscape, September 16-18, registration opens May 1.

Laurinda O'Connor Pastel Demo, Sept 9, Saco Museum, Saco, ME

Retreat: **Spring Retreat** at Damariscotta, June 9-12. 2-3 beds still available!

Conference: IAPS in Albuquerque, June 20-26. Several are going, please let us know if you are, too!

If you would like to help with something, please contact the pastel Society email or call a board member.

Info is found on the PSME website. Your questions may be asked & answered through the PSME Gmail. Direct your questions to President, Vice President, Social Media, or Newsletter Editor.

As your president, I am humbly honored to serve the PSME. Our aim is to edify our members with pastel education and competition opportunities, and to educate the public in the medium of pastel. This spring, Barbara Farcione resumes the high school scholarship program with PSME scholarship awards to two Sanford high school students. Thank you to Barbara for sharing her time for this worthy program!

Mary Beth

2022 Annual Spring Retreat: Wednesday June 8 – Sunday, June 12



Damariscotta, Maine

PSME's Annual retreat features a nice balance of plein air time and gathering time. The retreat will be based just minutes from downtown Damariscotta and Newcastle. The “twin villages” with its scenic harbor host many a restaurant, shops, and an incredible food co-op. A thirty-minute drive, the Pemaquid Peninsula features a picturesque lighthouse, historic sites, a fantastic sand beach, an Alpaca farm and many scenic geologic features and natural areas.

The area will inspire us with wonderful painting experiences. Plan to reconnect with your artist friends. Gathering each evening over a meal and the chance to share your art from the day along with camaraderie make this an event all can enjoy.

Annual Spring Retreat 2022 **June 8 (Wednesday) - 12 (Sunday) 2022 in Damariscotta, ME.**

Registration form is available at www.pastelsocietyofmaine.org/retreats

PSME Lending Library

CAPTURING THE LIGHT IN PASTEL



L I O N E L A G G E T T

Capturing the light in Pastel by Lionel Aggett

Paint pastel landscapes bathed in pale, glowing light and rich, warm colors with the aid of practical instruction from and inspirational finished works by one of the masters of the medium. Learn to capture nature's transient light conditions in order to anchor your work in time and space. Renowned artist Lionel Aggett offers easy-to-follow guidelines for working with pastels, choosing materials, and selecting a subject. He then explains how to approach the challenge of translating the unique effects of both natural and artificial light on paper. Develop your own approach to light, dealing with such variables

as weather, geography, time of day, and season. Numerous step-by-step examples and stunning finished paintings will help you achieve a more perceptive and personal response to light conditions, as you develop your practical ability to render your inspiration on paper.

Color foundation for the Painter DVD with Stephen Quiller

Quiller is highly regarded for his research and implementation of color theory in his painting expression. These DVDs provide a comprehensive guide to the use of color for the painter. They begin with a basic foundation and build gradually to the more complex. This DVD set is a complete course that will fine tune the artist's eye and help the painter grow in personal expression. The instructional videos are designed to help all artists and craftspeople who want to expand their knowledge of color



One of the benefits of PSME membership is your eligibility to borrow books, videos and DVDs from the PSME Lending Library. Information of our collection is found on our website www.pastelsocietyofmaine.org/lending-library. In order to access lending privileges, your membership must be current and you must pay a one-time registration fee of **\$10.00** and fill out request form from website. **Ruth Van Dine, Librarian.** Ruth@VanDineDesign.com or 401-480-7761 cell.

Member News

From **Becky Shorb**

After a year long medical journey I am back to painting regularly and continuing to experiment with new surfaces. I have been invited to give a demonstration to the Franklin County Art Alliance of Pennsylvania in April. What JOY to continue to share my love of pastels with other artists.

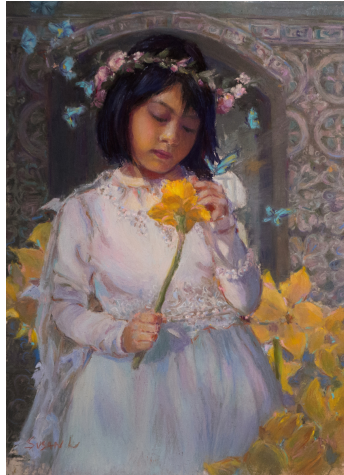
IN JOY,
Becky Shorb

Lisa Regopoulos is happy to announce her week long pop-up show, *Flying Solo*, at the Maine Art Hill, 5 Chase Hill Road, Kennebunk, ME, September 22 - 28th, 2022. She's excited to be unveiling pastel paintings from her new series featuring raptors, shore birds and songbirds in the landscape. *Winter White*, is one of the pastels from her new series. For more information, please visit www.lisaregopoulos.com She's also going to be one of the plein air painters in conjunction with the Signature Member show taking place at the Coastal Maine Botanical Gardens hosted by the Pastel Society of Maine. The plein air event will take place on Saturday, May 28th, 10am to 3:00pm. A reception for the Signature Member Show will be held the same day, 3pm to 4pm at the Borsage Education Center.



“Winter White”

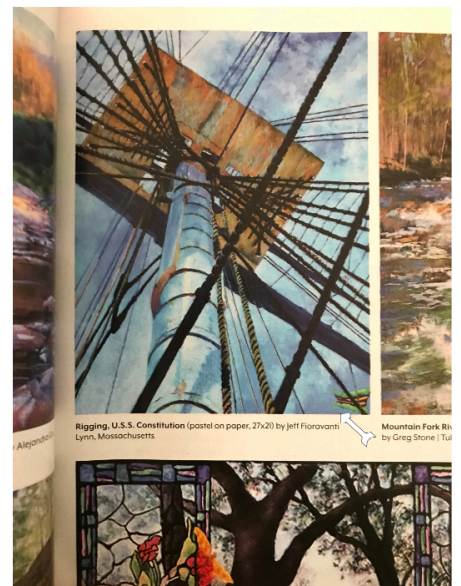
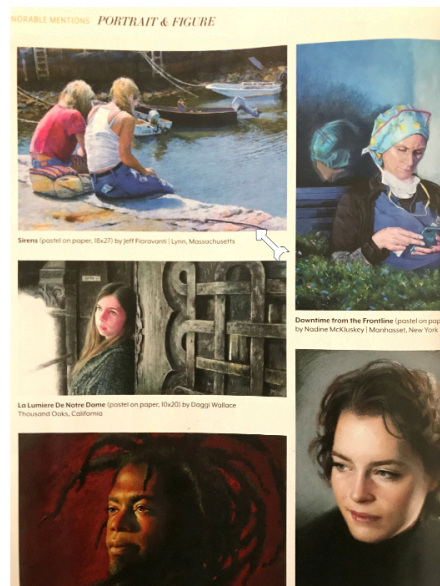
From **Shuk Susan Lee** ...



"In Her Own World"

1. "In Her Own World" won First Place in the "General Membership" category of the Pastel Society of the West Coast Juried Member online show. See image attached.
2. Earned Signature Member Status with the Pastel Society of the West Coast.
3. A cityscape was juried into the Left Coast Pastel Society "Pastels in Paradise" International Juried Online Show.

Jeff Fioravanti had two pieces receive an Honorable Mention in the 23rd Annual Pastel 100 competition; see attached. "Rigging (U.S.S. Constitution)" in the landscape category and "Sirens" in the Portrait/Figure category.



Jeff also had two pieces, Lifelines and Drydock juried in the Newburyport Art

Association Members Winter Juried II exhibition. February 5-27, 2022 at the Newburyport Art Association, Newburyport, MA.

Artistically yours, Jeff Fioravanti, CPS, CMPS, NHPSA, PSME, PPSCC, P Associate Artist of Unison Colour, Painting the Soul of America

Call To Artists

Pastel Society of New Hampshire
17th MEMBERS' EXHIBITION 2022
Wolfeboro Public Library
259 So. Main St. Wolfeboro, NH
July 2 through July 30

General comments

This show is open to all active Pastel Society of New Hampshire members. Please note our member show is now using www.showssubmit.com to process member applications and accept application fees. Do not send your payment to Paula (PSNH show chair).

Eligible work

All work must be at least 80% soft pastel. Work must be completed within the last three years. Work cannot be exhibited in another show concurrently and must be for sale. To encourage artists growth, paintings should not have previously won any award in national or international shows. Paintings should be ready to hang by wire, not sawtooth hanger. All sales of artwork will be subject to a 20% commission on sales made during the exhibition. All monies due the artist will be paid within 30 days after the close of the exhibition.

Waiver:

I understand that although all possible care will be taken for the safety of works on display, the Pastel Society of New Hampshire and the Wolfeboro Library, their officers or agents will not be responsible for damage or loss of any kind. Your entry through showssubmit.com validates waiver.

We want to encourage new artists to participate, and have a unique award category

Would you like to be considered for the "Hole in One award" which recognizes an aspiring artist?

Qualification: A painter who has not yet received a prize or award for any of their paintings.

EMAIL PAULA if you qualify and wish to be juried for this award @ pfraser8@yahoo.com

Submission and payment guidelines

All submissions are through www.showssubmit.com. Follow www.showssubmit.com guidelines for sizing and submitting. Save as a jpg, file. Name the file: Last name first _first initial _title of artwork.com. Payment is part of the show submit process. \$30 for up to two paintings. There is not an acceptance juror, all paintings are eligible. If you are new to showssubmit please know it's a free service to you. PSNH pays a fee to offer this.

Awards Judge

Aline Ordman, PSA, Master Pastelist, www.alineordman.com

Key Dates

Application opening date: May 1, 2022

Deadline for entry: June 15, 2022

Delivery and hanging, Saturday July 2, 1:00 – 3:00 (note judging begins at 3pm)

Potential paint out in Wolfeboro, TBD weather related

Awards, reception and Pickup Saturday July 30, 1:00 – 4:00

NEW Categories and Prizes! Over \$1600 cash and merchandise

Best in Show: \$300

First Place General Membership: \$250

First Place Signature Membership: \$250

2nd Place: \$200

3rd Place: \$150

Judith McKenna Landscape Award: \$100

Marilyn Bok Portrait Award: \$100

Abstract Award: Merchandise

Still Life Award: Merchandise

Sally Shea Hole in One Award \$100 awarded to an artist that has never received an award

Any questions please contact: Paula Fraser PSNH Chair, Phone 508 376 8734

Brush with Nature: Plein Air Event and Art Auction 2022

Maine Audubon is pleased to announce the return of Brush with Nature: Plein Air Event and Art Auction. We are inviting plein air painters to be inspired by nature at our sanctuaries and create art outdoors to engage visitors in the artistic process. The paintings will be auctioned off, with proceeds benefiting Maine Audubon's education, conservation, and advocacy programs. **Applications open Monday, March 7, 2022 and must be submitted by Monday, April 25, 2022.**

Juried artists will paint at one of the eight Maine Audubon sanctuaries from Saturday, August 20 through Tuesday, September 6, 2022. We require artists to be present on either Saturday, August 27 or Sunday, August 28 when the public is invited to watch participating artists work, visit the sanctuaries, and be inspired to create on their own. FMI: maineaudubon.org/visit

Website, Social Media, Upcoming Programs

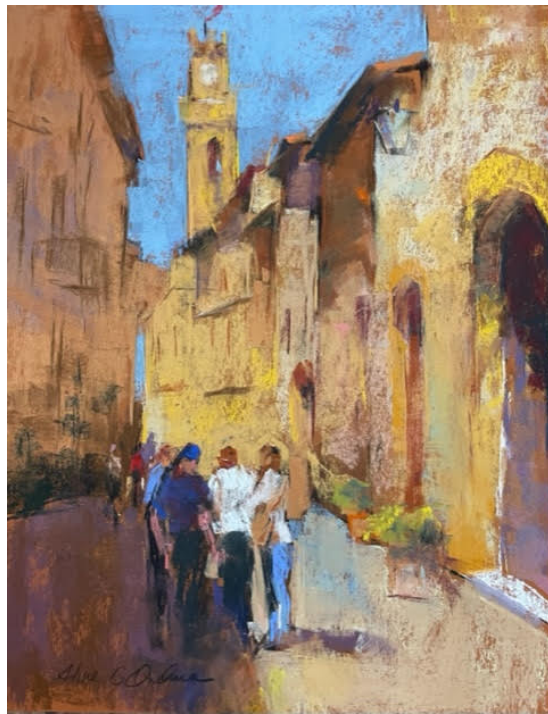
MEMBER DEMOS:

The PSME Winter Wine and Watch series for 2022 has had a great start with demos by member Polly Castor with a powerpoint about creating abstract art and Vermont artist Aline Ordman painting a wonderful Italian street scene. Our next two demos are with Andy McDermott and Tara Will. This is for members only so if you know someone who would like to attend, please encourage them to sign up to be a member of PSME. These presentations have helped the growth of our society quite a bit! And it's fun!

WEBSITE & SOCIAL MEDIA:

Occasionally do pursue the PSME Website @ PastelSocietyofMaine.org - it's a great source of info. We do our best to keep everything up-to-date: the Membership page, Events Calendar, Retreat and Exhibit information, rotate a variety of member images, and the resource link has the newsletters, how to prep images for submission to exhibits, the lending library and info on our sister societies and companies that donate prizes for our exhibits. Facebook and Instagram have been posting regular images of our members' paintings and promoting the society as a whole. Our exposure on these venues has been growing. Here's the Facebook QR code!

Please occasionally email us high resolution photos of new work to PastelSocietyOfMaine@gmail.com for promotional use on these visible sites.



Artist, Aline Ordman

(attached is Aline's demo to accompany Member Demos & QR CODE for Facebook ... if you'd like to use)



